

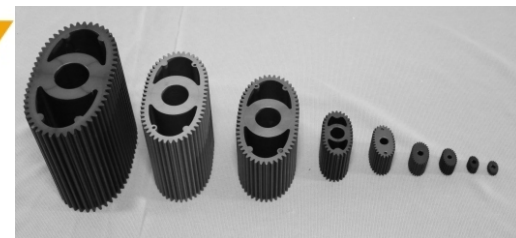
CE Certified

BT-DOFS - size



Oval gear Flow Sensor & Meter (Positive Displacement Flow Meter)

Flow
Level
Pressure
Temperature
Measuring
&
Control



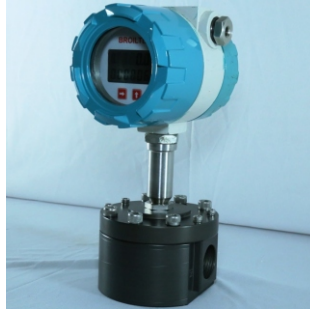
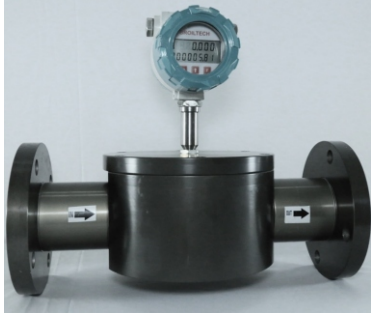
GLOBAL
SOLUTIONS
FOR YOUR MEASURING

www.broiltech.com
www.fuelsensor.in

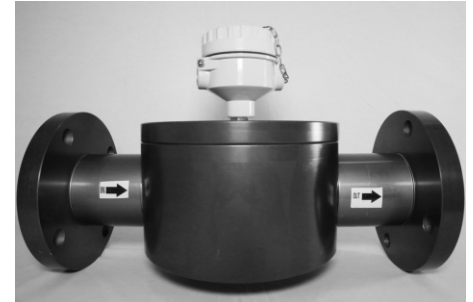


Oval gear Flow Meter

(positive displacement flow sensor)



BT-DOFS-D-size



Technical Data Sheet

Material of construction:

Enclosure : Aluminum anodize/S.S-304/S.S-316
Rotor : Aluminum anodize/S.S-316/PPS
O-ring : NBR/Viton
Shaft : Hard Stainless Steel-316
Accuracy (standard installation position) : $\pm 1\%$ RS /0.15% FSD
Repeatability : 0.1%
Maximum working pressure : 5 MPa for aluminum body
: 25 MPa for s.s. body
: above 250 bar please contact company

Fluid & Ambient temperature: -40 to 80°C

Power voltage: Battery operated

Connection: Thread (M/F) or flange

1) Pulse output sensor :

Power voltage: 12 V DC

Output signal: NPN open connector

Output:

high electric level : High than 8 VDC(input voltage 12 VDC)

low electric level : lower than 0.8 VDC(input voltage 12 VDC)

2) Battery operated meter :

Power voltage: 3.3 V 10AH lithium batteries can be used more than 5 years in a row.

display mode:

Double row Liquid Crystal Display (LCD), as follows:

L XXX. X four instantaneous flow (m³ / h) or L/h

XX. XXXXXX eight cumulative flow (m³) or L

Cumulative flow: automatically expand the display precision, the cumulative flow values can be reset.

Power-fail protection: instrument coefficient, the Total flow values ten years is not lost when power supply drop.

3) Display with 4 to 20 mA Output

Power voltage: 24 V DC

Output signal: 4 TO 20 mA



Oval gear Flow Sensor (positive displacement flow sensor)

BT-DOFS-size **BROIL**

Technical Data Sheet

Fuel flow sensor model no wise Technical data: ^

<u>Model no</u>	<u>Line size</u>	<u>Range</u>	<u>Litter/pulse</u>
BT-DOFS-003	4mm-- 1/4" Thread	0.05~30L/H	0.000333 L/P
BT-DOFS-004	4mm --1/4" Thread	0.2~60L/H	0.000416 L/P^
BT-DOFS-006	6mm --1/4" Thread	5~150L/H	0.000661 L/P^
BT-DOFS-008	8 mm--3/8" Thread	20~300L/H	0.0025 L/P^
BT-DOFS-012	12 mm--1/2" Thread	50~1200L/H	0.0025 L/P^
BT-DOFS-020	20 mm--3/4" Thread	150~2,000L/H	0.0154 L/P^
BT-DOFS-025	25 mm--1" Thread	200~4,000L/H	0.0256 L/P
BT-DOFS-040	40 mm-- 1.5" Flange	500~10,000L/H	0.086 L/P^
BT-DOFS-050	50 mm-- 2" Flange	600~20,000L/H	0.19 L/P^
BT-DOFS-080	80 mm -- 3" Flange	1,000~50,000L/H	0.54 L/P^
BT-DOFS-100	100 mm-- 4" Flange	2,000~100,000L/H	1.0 L/P^
BT-DOFS-150	150 mm-- 4" Flange	5,000~150,000L/H	3.2 L/P^



Calibration process

- *Calibrated each flow sensor with three pressure point : 0.5, 4 and 25 bar ,
- *all pressure calculate pulse/litter at : 25%, 50%, 75% and 100% flow rate
- *Calibrated with pure diesel

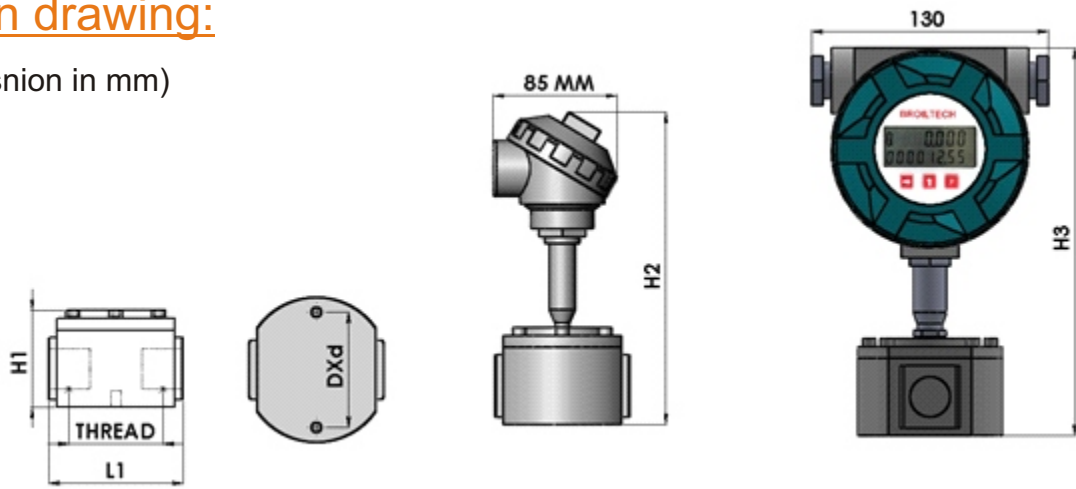
Application:

Aluminum body and rotor : Flow measurements of kerosene, Gasoline, diesel, light oil, heavy oil
S.S. body and rotor : Flow measurements of Pharmaceutical drug, food oil, and all application

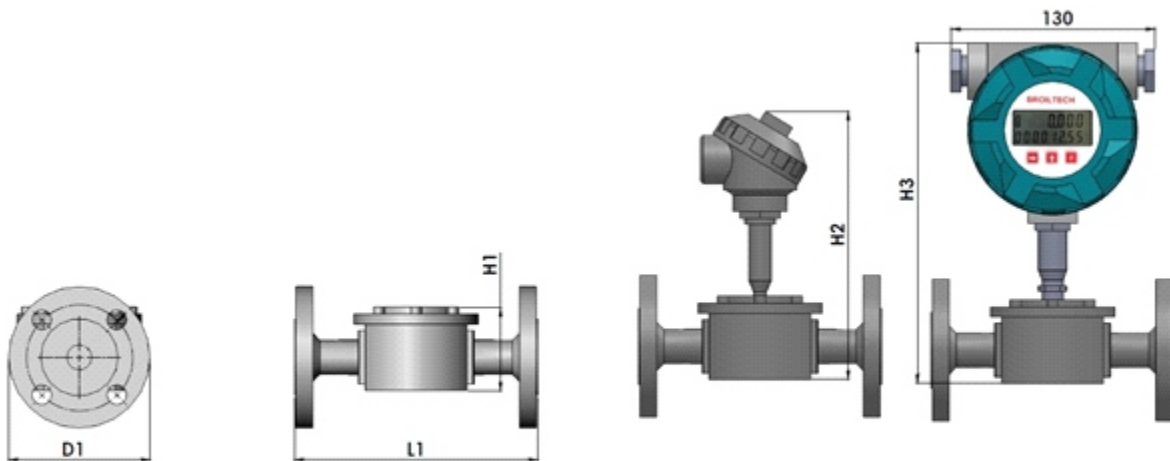


Dimension drawing:

(all dimesnion in mm)



	L 1	H 1	D X d	T H R E A D	H 2	H 3
4	60	45	50 X M 5	1 / 4 " B S P	210	235
6	60	45	50 X M 5	1 / 4 " B S P	210	235
8	68	50	60 X M 5	3 / 8 " B S P	215	240
12	78	50	60 X M 5	1 / 2 " B S P	215	240
20	82	59	75 X M 5	3 / 4 " B S P	224	249
25	94	68	90 X M 5	1 " B S P	233	258
40	198	98	180 X M 8	1 . 2 5 " B S P	263	288
50	198	130	180 X M 8	2 " B S P	295	320
80	210	140	200 X M 8	3 " B S P	305	330



P A R T	L 1	H 1	D 1	H 2	H 3
4 M M	150	45	1 / 2 " 150 C L A S S	210	235
6	150	45	1 / 2 " 150 C L A S S	210	235
8	170	50	1 / 2 " 150 C L A S S	215	240
12	175	50	1 / 2 " 150 C L A S S	215	240
20	180	59	1 / 2 " 150 C L A S S	224	249
25	200	68	1 " 150 C L A S S	233	258
40	291	98	1 1 / 2 " 150 C L A S S	263	288
50	420	130	2 " 150 C L A S S	295	320
80	425	140	3 " 150 C L A S S	305	330